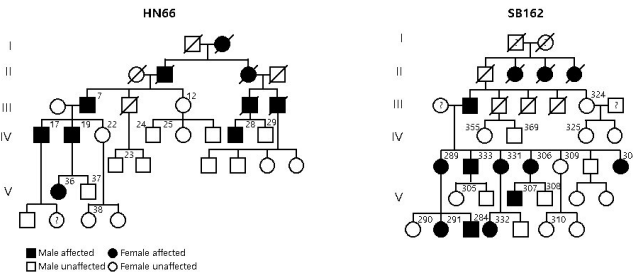


# Facilitating speech comprehension in rare inherited hearing loss patients

24 May 2021



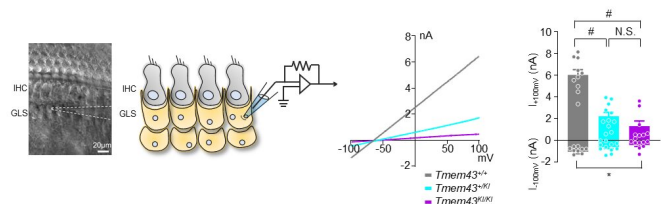
Family trees from Chinese family (HN66) and Korean family (SB162) segregating TMEM43-p.(Arg372Ter) variant in an autosomal dominant fashion. Credit: Institute for Basic Science

Hearing loss is a disability that affects approximately 5% of the world's population. Clinically determining the exact site of the lesion is critical for choosing a proper treatment for hearing loss. For example, subjects with damage in sound conduction or mild outer hair cell damage would benefit from hearing aids, while those with significant damage to outer or inner hair cells would benefit from cochlear implants. On the other hand, the subjects with impairments in more central structures such as the cochlear nerve, brainstem, or brain do not benefit from either hearing aids or cochlear implants. However, the role of impairments in cochlear glial cells in hearing loss is not as well known. While it is known that connexin channels in cochlear glial cells play important role in mediating potassium current in the cochlea, the molecular and cellular mechanism of connexin channels and their role in progressive hearing loss has not been studied extensively.

Auditory neuropathy spectrum disorder (ANSD) is a confounding auditory disease where the subjects can respond to sound but have difficulties in speech discrimination. Recently, a collaboration of researchers from the Center for Cognition &

Sociality (IBS), Seoul National University Bundang Hospital, Mokpo National University, Central South University, and the University of Miami, identified a previously unknown deafness gene that causes this disease. The new gene, TMEM43, is located in chromosome 3 and is mainly expressed in glia-like supporting cells (GLSs) of the cochlea. They identified that the p.(Arg372Ter) variant of TMEM43 was inherited in two prominent Asian families in South Korea and China who are known to suffer from ANSD.

In order to study this disease, researchers used a [transgenic mouse model](#) with the defective TMEM43-p.(Arg372Ter) gene. Researchers found out that this mouse model exhibited the same progressive [hearing loss](#) as the human ANSD subjects. Further examination of these mice revealed that the GLS cell size was smaller in older mice in comparison to that of the control mice. In addition, the TMEM43 protein was shown to interact with connexin channels (Cx26 and Cx30), which are known to regulate K<sup>+</sup> conductance in the cochlea. The K<sup>+</sup> conductance was significantly impaired in the mutant mouse. Based on the mechanistic insights from the mouse model, researchers performed cochlear implants on 3 human ANSD patients, which resulted in the successful restoration of their speech discrimination.



Electrical recordings from glia-like supporting cell (GLS) of cochlea. Knock-in (KI) mouse with TMEM43-p.(Arg372Ter) variant exhibits disruption of GLS K<sup>+</sup> conductance. Grey; control mice, cyan;

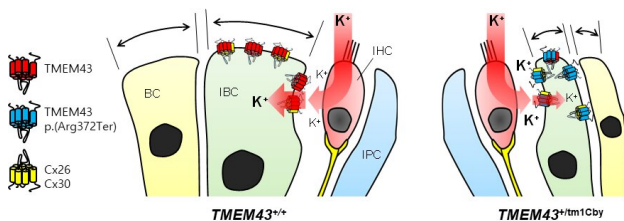
heterozygous KI mice, purple; homozygous KI mice.  
Credit: Institute for Basic Science

to K<sup>+</sup> conductance on cochlear glial cells, researchers plan to continue their study about the role of TMEM43 protein and the ion channels in the brain.

This study is notable in that they identified a novel deafness gene from humans, studied the underlying mechanism of the genetic variant found from human subjects using a [mouse model](#) and applied the result back to human patients with successful clinical outcomes. Therefore, this study provides a model platform in which the personalized model of auditory rehabilitation can be determined, highlighting the importance of a precision medicine-based approach.

**More information:** A nonsense TMEM43 variant leads to disruption of connexin-linked function and autosomal dominant auditory neuropathy spectrum disorder. *PNAS*, 2021.

Provided by Institute for Basic Science



Schematic diagram illustrating the role of TMEM43 in the cochlear GLS. The cochlear GLSs with TMEM43-p.(Arg372Ter) (right) display significantly decreased K<sup>+</sup>-mediated passive current conductance compared to its WT counterpart (left), and its capacity to maintain the cellular volume is disturbed. Credit: Institute for Basic Science

Dr. Choi Byung Yoon stated that "We are excited to add TMEM43 to the list of genes that cause deafness. It will greatly contribute to accurate diagnosis and customized treatment of deafness with a simple genetic test." In addition, Director C. Justin Lee mentioned that "This study emphasizes the important role of glial cells in the cochlea. We are positive that further research will give hope to many patients who suffer from this rare form of deafness."

As a future follow-up study, the researchers look forward to recruiting additional subjects with other ANSD gene variants in order to provide further clinical insights into this rare deafness disease. Based on the fact that TMEM43 protein contributes

APA citation: Facilitating speech comprehension in rare inherited hearing loss patients (2021, May 24) retrieved 17 July 2022 from <https://medicalxpress.com/news/2021-05-speech-comprehension-rare-inherited-loss.html>

*This document is subject to copyright. Apart from any fair dealing for the purpose of private study or research, no part may be reproduced without the written permission. The content is provided for information purposes only.*